



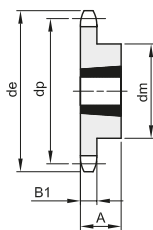
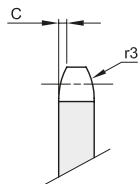
PIGNONI PER BUSSOLA CONICA - DIN 8187 - ISO 606

SPROCKETS FOR TAPER BUSHES - DIN 8187 - ISO 606

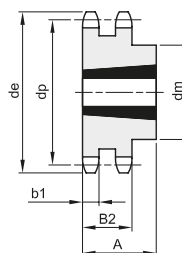
3/8" x 7/32"
9,525 x 5,72 mm
Rullo 6,35 mm
06B - 1 - 2 - 3

B1 B2 B3 b1 C r3

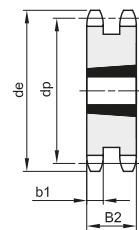
5,3 15,4 25,6 5,2 1 10



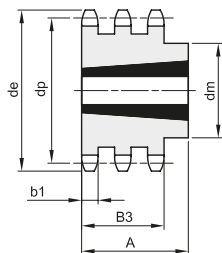
1



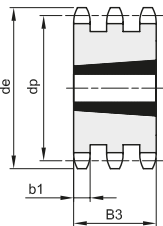
2



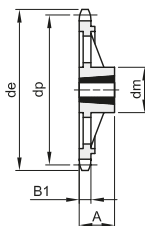
3



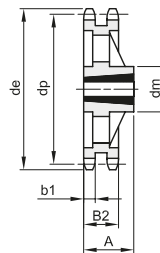
4



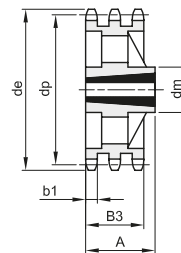
5



6



7



8

Materiale: Acciaio C45 / *Materiale: Ghisa EN-GJL-200

| Z | de | dp | semplici | | | | | | doppi | | | | | tripli | | | | | | |
|-----|-------|--------|-----------|----|----|---------|------|------|-----------|----|----|---------|------|--------|-----------|------|------|---------|------|------|
| | | | codice | dm | A | Bussola | Tipo | Kg. | codice | dm | A | Bussola | Tipo | Kg. | codice | dm | A | Bussola | Tipo | Kg. |
| 17 | 55,5 | 51,83 | 381330017 | 45 | 22 | 1008 | 1 | 0,11 | 382330017 | 41 | 22 | 1008 | 2 | 0,11 | 383330017 | 25,6 | 1008 | 5 | 0,15 | |
| 18 | 58,6 | 54,85 | 381330018 | 45 | 22 | 1008 | 1 | 0,14 | 382330018 | 43 | 22 | 1008 | 2 | 0,15 | | | | | | |
| 19 | 61,6 | 57,86 | 381330019 | 45 | 22 | 1008 | 1 | 0,15 | 382330019 | 46 | 22 | 1008 | 2 | 0,18 | 383330019 | 25,6 | 1008 | 5 | 0,24 | |
| 20 | 64,6 | 60,89 | 381330020 | 46 | 22 | 1008 | 1 | 0,16 | 382330020 | 48 | 22 | 1008 | 2 | 0,22 | | | | | | |
| 21 | 67,6 | 63,90 | 381330021 | 46 | 22 | 1008 | 1 | 0,18 | 382330021 | 49 | 22 | 1008 | 2 | 0,16 | 383330021 | 25,6 | 1008 | 5 | 0,34 | |
| 22 | 70,6 | 66,93 | 381330022 | 55 | 22 | 1108 | 1 | 0,25 | 382330022 | 52 | 22 | 1108 | 2 | 0,28 | | | | | | |
| 23 | 73,7 | 69,95 | 381330023 | 63 | 25 | 1210 | 1 | 0,27 | 382330023 | 59 | 25 | 1210 | 2 | 0,27 | 383330023 | 25,6 | 1210 | 5 | 0,30 | |
| 24 | 76,7 | 72,97 | 381330024 | 63 | 25 | 1210 | 1 | 0,30 | 382330024 | 61 | 25 | 1210 | 2 | 0,32 | | | | | | |
| 25 | 79,7 | 75,99 | 381330025 | 63 | 25 | 1210 | 1 | 0,32 | 382330025 | 64 | 25 | 1210 | 2 | 0,37 | 383330025 | 25,6 | 1210 | 5 | 0,41 | |
| 26 | 82,7 | 79,02 | 381330026 | 63 | 25 | 1210 | 1 | 0,33 | 382330026 | 65 | 25 | 1210 | 2 | 0,44 | | | | | | |
| 27 | 85,7 | 82,04 | 381330027 | 63 | 25 | 1210 | 1 | 0,34 | 382330027 | 70 | 25 | 1210 | 2 | 0,50 | 383330027 | 25,6 | 1210 | 5 | 0,55 | |
| 28 | 88,8 | 85,07 | 381330028 | 63 | 25 | 1210 | 1 | 0,37 | 382330028 | 70 | 25 | 1210 | 2 | 0,57 | | | | | | |
| 30 | 94,8 | 91,12 | 381330030 | 63 | 25 | 1210 | 1 | 0,39 | 382330030 | 75 | 25 | 1210 | 2 | 0,68 | 383330030 | 79 | 38 | 1615 | 4 | 0,88 |
| 38 | 119,0 | 115,34 | 381330038 | 70 | 25 | 1210 | 1 | 0,65 | 382330038 | 80 | 25 | 1610 | 2 | 1,03 | 383330038 | 90 | 38 | 1615 | 4 | 1,75 |
| 45 | 141,1 | 136,54 | 381330045 | 70 | 25 | 1210 | 1 | 1,01 | | | | | | | | | | | | |
| 57* | 177,5 | 172,91 | 381330057 | 83 | 25 | 1210 | 6 | 1,34 | 382330057 | 90 | 25 | 1610 | 7 | 1,16 | | | | | | |
| 76* | 235,1 | 230,49 | 381330076 | 83 | 25 | 1210 | 6 | 1,84 | 382330076 | 90 | 25 | 1610 | 7 | 2,19 | | | | | | |



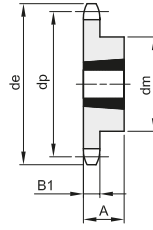
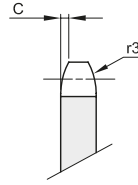
PIGNONI PER BUSSOLA CONICA - DIN 8187 - ISO 606

SPROCKETS FOR TAPER BUSHES - DIN 8187 - ISO 606

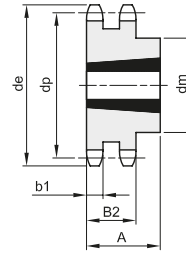
1/2" x 5/16"
12,7 x 7,75 mm
Rullo 8,51 mm
08B - 1 - 2 - 3

B1 B2 B3 b1 C r3

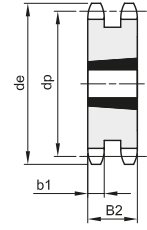
7,2 21 34,9 7 1,3 13



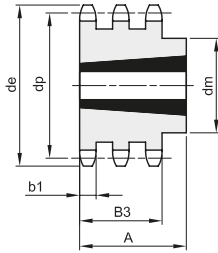
1



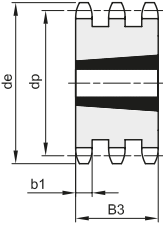
2



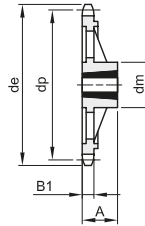
3



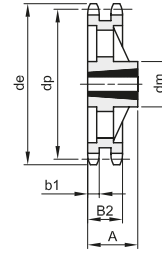
4



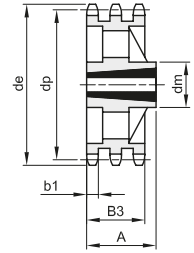
5



6



7



8

Materiale: Acciaio C45 / *Materiale: Ghisa EN-GJL-200

| Z | de | dp | semplici | | | | | | doppi | | | | | tripli | | | | | | |
|-----|-------|--------|-----------|-----|----|---------|------|------|-----------|-----|----|---------|------|--------|-----------|------|------|---------|------|------|
| | | | codice | dm | A | Bussola | Tipo | Kg. | codice | dm | A | Bussola | Tipo | Kg. | codice | dm | A | Bussola | Tipo | Kg. |
| 15 | 66,5 | 61,80 | 381340015 | 45 | 22 | 1008 | 1 | 0,16 | 382340015 | 46 | 22 | 1008 | 2 | 0,22 | 383340015 | 34,9 | 1008 | 5 | 0,36 | |
| 16 | 69,9 | 65,10 | 381340016 | 50 | 22 | 1108 | 1 | 0,20 | 382340016 | 50 | 22 | 1108 | 2 | 0,22 | | | | | | |
| 17 | 74,5 | 69,11 | 381340017 | 60 | 25 | 1210 | 1 | 0,22 | 382340017 | 56 | 25 | 1210 | 2 | 0,23 | 383340017 | 34,9 | 1210 | 5 | 0,35 | |
| 18 | 78,0 | 73,14 | 381340018 | 60 | 25 | 1210 | 1 | 0,27 | 382340018 | 60 | 25 | 1210 | 2 | 0,30 | | | | | | |
| 19 | 82,5 | 77,15 | 381340019 | 63 | 25 | 1210 | 1 | 0,33 | 382340019 | 62 | 25 | 1210 | 2 | 0,38 | 383340019 | 62 | 38 | 1215 | 4 | 0,61 |
| 20 | 86,0 | 81,19 | 381340020 | 67 | 25 | 1610 | 1 | 0,27 | 382340020 | 66 | 25 | 1610 | 2 | 0,45 | | | | | | |
| 21 | 90,6 | 85,21 | 381340021 | 71 | 25 | 1610 | 1 | 0,36 | 382340021 | 70 | 25 | 1610 | 2 | 0,50 | 383340021 | 70 | 38 | 1615 | 4 | 0,65 |
| 22 | 94,1 | 89,24 | 381340022 | 71 | 25 | 1610 | 1 | 0,36 | 382340022 | 76 | 25 | 1610 | 2 | 0,55 | | | | | | |
| 23 | 98,7 | 93,26 | 381340023 | 76 | 25 | 1610 | 1 | 0,50 | 382340023 | 79 | 25 | 1610 | 2 | 0,62 | 383340023 | 70 | 38 | 1615 | 4 | 0,93 |
| 24 | 102,1 | 97,29 | 381340024 | 76 | 25 | 1610 | 1 | 0,53 | 382340024 | 84 | 32 | 2012 | 2 | 0,68 | | | | | | |
| 25 | 106,7 | 101,32 | 381340025 | 76 | 25 | 1610 | 1 | 0,56 | 382340025 | 87 | 32 | 2012 | 2 | 0,72 | 383340025 | 34,9 | 2012 | 5 | 0,85 | |
| 26 | 110,2 | 105,36 | 381340026 | 76 | 25 | 1610 | 1 | 0,60 | 382340026 | 87 | 32 | 2012 | 2 | 0,82 | | | | | | |
| 27 | 114,8 | 109,39 | 381340027 | 76 | 25 | 1610 | 1 | 0,63 | 382340027 | 87 | 32 | 2012 | 2 | 0,92 | 383340027 | 34,9 | 2012 | 5 | 1,18 | |
| 28 | 118,3 | 113,42 | 381340028 | 90 | 32 | 2012 | 1 | 0,77 | 382340028 | 87 | 32 | 2012 | 2 | 1,10 | | | | | | |
| 30 | 126,9 | 121,49 | 381340030 | 90 | 32 | 2012 | 1 | 0,91 | 382340030 | 87 | 32 | 2012 | 2 | 1,24 | 383340030 | 34,9 | 2012 | 5 | 1,73 | |
| 38 | 159,2 | 153,79 | 381340038 | 90 | 32 | 2012 | 1 | 1,25 | 382340038 | 100 | 32 | 2012 | 2 | 2,50 | 383340038 | 34,9 | 2012 | 5 | 3,53 | |
| 45 | 188,6 | 182,07 | 381340045 | 111 | 32 | 2012 | 1 | 1,68 | | | | | | | | | | | | |
| 57* | 237,1 | 230,54 | 381340057 | 111 | 32 | 2012 | 6 | 2,78 | 382340057 | 111 | 32 | 2012 | 7 | 3,64 | | | | | | |
| 76* | 313,9 | 307,33 | 381340076 | 111 | 32 | 2012 | 6 | 3,81 | 382340076 | 111 | 32 | 2012 | 7 | 5,09 | | | | | | |



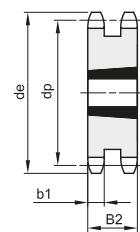
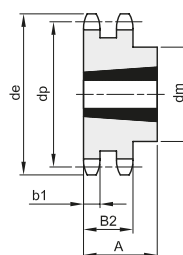
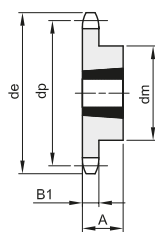
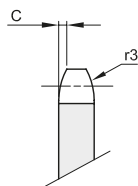
PIGNONI PER BUSSOLA CONICA - DIN 8187 - ISO 606

SPROCKETS FOR TAPER BUSHES - DIN 8187 - ISO 606

5/8" x 3/8"
15,875 x 9,65 mm
 Rullo 10,16 mm
10B - 1 - 2 - 3

B1 B2 B3 b1 C r3

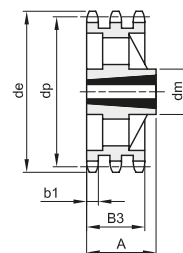
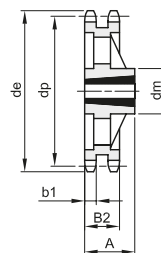
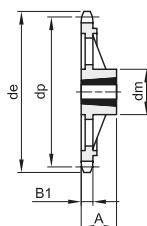
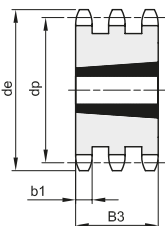
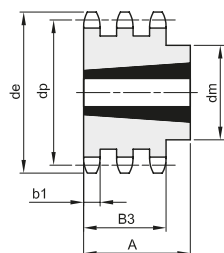
9,1 25,5 42,1 9 1,6 16



1

2

3



4

5

6

7

8

Materiale: Acciaio C45 / *Materiale: Ghisa EN-GJL-200

| Z | de | dp | semplici | | | | | | doppi | | | | | tripli | | | | | | |
|-----|-------|--------|-----------|-----|----|---------|------|------|-----------|------|------|---------|------|-----------|-----------|------|----|---------|------|------|
| | | | codice | dm | A | Bussola | Tipo | Kg. | codice | dm | A | Bussola | Tipo | Kg. | codice | dm | A | Bussola | Tipo | Kg. |
| 13 | 73,2 | 66,33 | 381350013 | 47 | 22 | 1008 | 1 | 0,23 | | | | | | | | | | | | |
| 14 | 78,2 | 71,34 | 381350014 | 52 | 22 | 1108 | 1 | 0,27 | | | | | | | | | | | | |
| 15 | 83,2 | 76,35 | 381350015 | 60 | 25 | 1210 | 1 | 0,30 | 382350015 | 25,5 | 1210 | 3 | 0,38 | 383350015 | 42,1 | 1215 | 5 | 0,63 | | |
| 16 | 88,3 | 81,37 | 381350016 | 63 | 25 | 1210 | 1 | 0,38 | 382350016 | 25,5 | 1610 | 3 | 0,42 | | | | | | | |
| 17 | 93,3 | 86,39 | 381350017 | 71 | 25 | 1610 | 1 | 0,38 | 382350017 | 25,5 | 1610 | 3 | 0,47 | 383350017 | 42,1 | 1215 | 5 | 1,01 | | |
| 18 | 98,3 | 91,42 | 381350018 | 71 | 25 | 1610 | 1 | 0,43 | 382350018 | 25,5 | 1610 | 3 | 0,60 | | | | | | | |
| 19 | 103,3 | 96,44 | 381350019 | 75 | 25 | 1610 | 1 | 0,54 | 382350019 | 25,5 | 1610 | 3 | 0,72 | 383350019 | 42,1 | 1615 | 5 | 1,19 | | |
| 20 | 108,4 | 101,49 | 381350020 | 76 | 25 | 1610 | 1 | 0,61 | 382350020 | 25,5 | 1610 | 3 | 0,87 | | | | | | | |
| 21 | 113,4 | 106,51 | 381350021 | 76 | 25 | 1610 | 1 | 0,65 | 382350021 | 25,5 | 1610 | 3 | 1,01 | 383350021 | 42,1 | 1615 | 5 | 1,66 | | |
| 22 | 118,4 | 111,55 | 381350022 | 76 | 25 | 1610 | 1 | 0,72 | 382350022 | 25,5 | 1610 | 3 | 1,18 | | | | | | | |
| 23 | 123,5 | 116,58 | 381350023 | 76 | 25 | 1610 | 1 | 0,77 | 382350023 | 25,5 | 1610 | 3 | 1,35 | 383350023 | 42,1 | 2012 | 5 | 1,78 | | |
| 24 | 128,5 | 121,62 | 381350024 | 90 | 32 | 2012 | 1 | 0,98 | 382350024 | 90 | 32 | 2012 | 2 | 1,45 | | | | | | |
| 25 | 133,6 | 126,66 | 381350025 | 90 | 32 | 2012 | 1 | 1,05 | 382350025 | 90 | 32 | 2012 | 2 | 1,55 | 383350025 | 105 | 44 | 2517 | 4 | 1,81 |
| 26 | 138,6 | 131,70 | 381350026 | 90 | 32 | 2012 | 1 | 1,11 | 382350026 | 90 | 32 | 2012 | 2 | 1,75 | | | | | | |
| 27 | 143,6 | 136,74 | 381350027 | 90 | 32 | 2012 | 1 | 1,17 | 382350027 | 90 | 32 | 2012 | 2 | 1,98 | 383350027 | 110 | 44 | 2517 | 4 | 2,45 |
| 28 | 148,7 | 141,78 | 381350028 | 90 | 32 | 2012 | 1 | 1,29 | 382350028 | 90 | 32 | 2012 | 2 | 2,30 | | | | | | |
| 30 | 158,8 | 151,87 | 381350030 | 90 | 32 | 2012 | 1 | 1,40 | 382350030 | 90 | 32 | 2012 | 2 | 2,63 | 383350030 | 120 | 44 | 2517 | 4 | 3,54 |
| 38 | 199,1 | 192,23 | 381350038 | 100 | 32 | 2012 | 1 | 2,43 | | | | | | | | | | | | |
| 45 | 236,0 | 227,58 | 381350045 | 111 | 32 | 2012 | 1 | 3,55 | | | | | | | | | | | | |
| 57* | 296,6 | 288,18 | 381350057 | 111 | 32 | 2012 | 6 | 4,28 | | | | | | | | | | | | |
| 76* | 392,5 | 384,16 | 381350076 | 111 | 32 | 2012 | 6 | 5,95 | | | | | | | | | | | | |



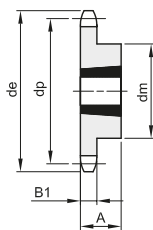
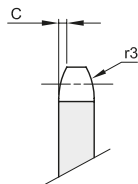
PIGNONI PER BUSSOLA CONICA - DIN 8187 - ISO 606

SPROCKETS FOR TAPER BUSHES - DIN 8187 - ISO 606

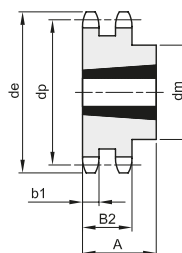
3/4" x 7/16"
19,05 x 11,68 mm
 Rullo 12,07 mm
 12B - 1 - 2 - 3

B1 B2 B3 b1 C r3

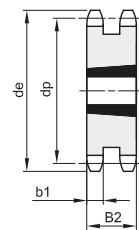
11,1 30,3 49,8 10,8 2 19



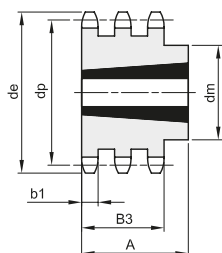
1



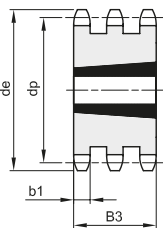
2



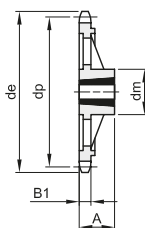
3



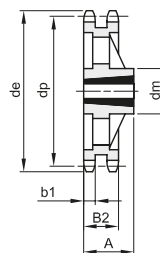
4



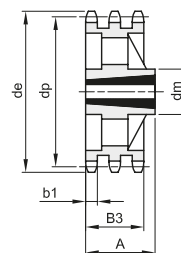
5



6



7



8

Materiale: Acciaio C45 / *Materiale: Ghisa EN-GJL-200

| Z | de | dp | semplici | | | | | doppi | | | | | tripli | | | | | | | | | |
|-----|-------|--------|-----------|-----|----|---------|------|-------|-----------|------|------|---------|--------|-----------|-----------|------|------|---------|------|-------|--|--|
| | | | codice | dm | A | Bussola | Tipo | Kg. | codice | dm | A | Bussola | Tipo | Kg. | codice | dm | A | Bussola | Tipo | Kg. | | |
| 13 | 87,8 | 79,60 | 381360013 | 60 | 25 | 1210 | 1 | 0,35 | | | | | | | | | | | | | | |
| 14 | 93,8 | 85,61 | 381360014 | 67 | 25 | 1610 | 1 | 0,40 | | | | | | | | | | | | | | |
| 15 | 99,8 | 91,62 | 381360015 | 70 | 25 | 1610 | 1 | 0,44 | 382360015 | 30,3 | 1610 | 3 | 0,68 | 383360015 | 49,8 | 1615 | 5 | 1,11 | | | | |
| 16 | 105,8 | 97,65 | 381360016 | 71 | 25 | 1610 | 1 | 0,53 | 382360016 | 30,3 | 1610 | 3 | 0,89 | | | | | | | | | |
| 17 | 111,9 | 103,67 | 381360017 | 76 | 25 | 1610 | 1 | 0,66 | 382360017 | 30,3 | 1610 | 3 | 1,14 | 383360017 | 49,8 | 1615 | 5 | 1,75 | | | | |
| 18 | 117,9 | 109,71 | 381360018 | 90 | 32 | 2012 | 1 | 0,86 | 382360018 | 90 | 32 | 2012 | 2 | 1,18 | | | | | | | | |
| 19 | 123,9 | 115,73 | 381360019 | 90 | 32 | 2012 | 1 | 0,94 | 382360019 | 90 | 32 | 2012 | 2 | 1,24 | 383360019 | 49,8 | 2012 | 5 | 1,99 | | | |
| 20 | 130,0 | 121,78 | 381360020 | 90 | 32 | 2012 | 1 | 1,04 | 382360020 | 108 | 44 | 2517 | 2 | 1,40 | | | | | | | | |
| 21 | 136,0 | 127,81 | 381360021 | 102 | 44 | 2517 | 1 | 1,24 | 382360021 | 108 | 44 | 2517 | 2 | 1,68 | 383360021 | 49,8 | 2517 | 5 | 2,09 | | | |
| 22 | 142,0 | 133,86 | 381360022 | 108 | 44 | 2517 | 1 | 1,60 | 382360022 | 108 | 44 | 2517 | 2 | 1,99 | | | | | | | | |
| 23 | 148,1 | 139,90 | 381360023 | 108 | 44 | 2517 | 1 | 1,70 | 382360023 | 108 | 44 | 2517 | 2 | 2,24 | 383360023 | 49,8 | 2517 | 5 | 3,00 | | | |
| 24 | 154,1 | 145,94 | 381360024 | 108 | 44 | 2517 | 1 | 1,81 | 382360024 | 108 | 44 | 2517 | 2 | 2,54 | | | | | | | | |
| 25 | 160,2 | 151,99 | 381360025 | 108 | 44 | 2517 | 1 | 1,93 | 382360025 | 108 | 44 | 2517 | 2 | 2,87 | 383360025 | 49,8 | 2517 | 5 | 3,98 | | | |
| 26 | 166,2 | 158,04 | 381360026 | 108 | 44 | 2517 | 1 | 2,04 | 382360026 | 108 | 44 | 2517 | 2 | 3,17 | | | | | | | | |
| 27 | 172,3 | 164,09 | 381360027 | 108 | 44 | 2517 | 1 | 2,14 | 382360027 | 108 | 44 | 2517 | 2 | 3,55 | 383360027 | 140 | 51 | 3020 | 4 | 3,90 | | |
| 28 | 178,3 | 170,13 | 381360028 | 108 | 44 | 2517 | 1 | 2,37 | 382360028 | 108 | 44 | 2517 | 2 | 4,10 | | | | | | | | |
| 30 | 190,4 | 182,24 | 381360030 | 108 | 44 | 2517 | 1 | 2,60 | 382360030 | 108 | 44 | 2517 | 2 | 4,62 | 383360030 | 140 | 51 | 3020 | 4 | 5,64 | | |
| 38 | 238,9 | 230,69 | 381360038 | 108 | 44 | 2517 | 1 | 3,93 | 382360038 | 140 | 51 | 3020 | 2 | 8,11 | 383360038 | 140 | 51 | 3020 | 4 | 11,58 | | |
| 45 | 283,2 | 273,10 | 381360045 | 124 | 44 | 2517 | 1 | 5,52 | | | | | | | | | | | | | | |
| 57* | 355,9 | 345,81 | 381360057 | 124 | 44 | 2517 | 6 | 6,48 | 382360057 | 160 | 51 | 3020 | 7 | 10,28 | 383360057 | 160 | 51 | 3020 | 8 | 13,23 | | |
| 76* | 471,1 | 460,99 | 381360076 | 124 | 44 | 2517 | 6 | 9,71 | 382360076 | 160 | 51 | 3020 | 7 | 15,24 | | | | | | | | |



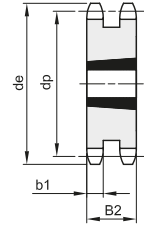
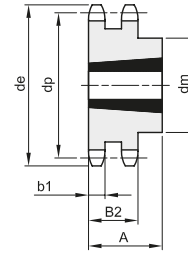
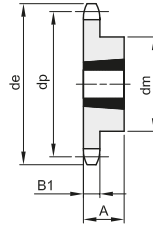
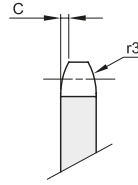
PIGNONI PER BUSSOLA CONICA - DIN 8187 - ISO 606

SPROCKETS FOR TAPER BUSHES - DIN 8187 - ISO 606

1" x 17,02 mm
25,4 x 17,02 mm
Rullo 15,88 mm
16B - 1 - 2 - 3

B1 B2 B3 b1 C r3

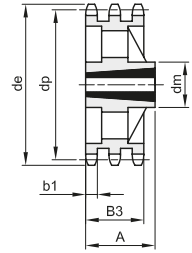
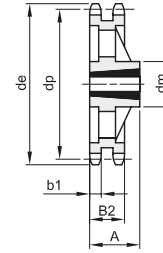
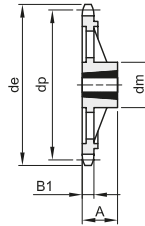
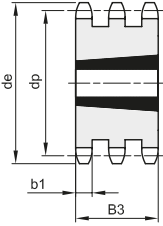
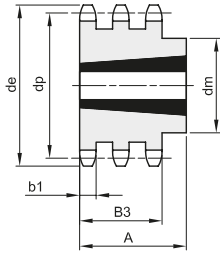
16,2 47,7 79,6 15,8 2,5 26



1

2

3



4

5

6

7

8

Materiale: Acciaio C45 / *Materiale: Ghisa EN-GJL-200

| Z | de | dp | semplici | | | | doppi | | | | | tripli | | | | | | | | |
|-----|-------|--------|-----------|-----|----|--------------|-------|--------|-----------|------|--------------|--------|--------|-----------|-----------|--------------|------|------|------|-------|
| | | | codice | dm | A | Bussola Tipo | Kg. | codice | dm | A | Bussola Tipo | Kg. | codice | dm | A | Bussola Tipo | Kg. | | | |
| 13 | 117,7 | 106,13 | 381380013 | 73 | 38 | 1615 | 1 | 0,98 | | | | | | | | | | | | |
| 14 | 125,7 | 114,15 | 381380014 | 75 | 38 | 1615 | 1 | 1,14 | | | | | | | | | | | | |
| 15 | 133,7 | 122,16 | 381380015 | 76 | 38 | 1615 | 1 | 1,30 | 382380015 | 47,7 | 2012 | 3 | 2,11 | | | | | | | |
| 16 | 141,8 | 130,20 | 381380016 | 90 | 32 | 2012 | 1 | 1,40 | 382380016 | 47,7 | 2517 | 3 | 2,25 | | | | | | | |
| 17 | 149,8 | 138,23 | 381380017 | 90 | 32 | 2012 | 1 | 1,59 | 382380017 | 47,7 | 2517 | 3 | 2,53 | 383380017 | 79,6 | 2517 | 5 | 4,29 | | |
| 18 | 157,8 | 146,28 | 381380018 | 108 | 44 | 2517 | 1 | 2,10 | 382380018 | 47,7 | 2517 | 3 | 3,10 | | | | | | | |
| 19 | 165,9 | 154,31 | 381380019 | 108 | 44 | 2517 | 1 | 2,29 | 382380019 | 47,7 | 2517 | 3 | 3,80 | 383380019 | 79,6 | 3030 | 5 | 4,36 | | |
| 20 | 173,9 | 162,38 | 381380020 | 110 | 44 | 2517 | 1 | 2,60 | 382380020 | 47,7 | 2517 | 3 | 4,10 | | | | | | | |
| 21 | 182,0 | 170,42 | 381380021 | 110 | 44 | 2517 | 1 | 2,81 | 382380021 | 140 | 51 | 3020 | 2 | 4,15 | 383380021 | 79,6 | 3030 | 5 | 6,69 | |
| 22 | 190,1 | 178,48 | 381380022 | 110 | 44 | 2517 | 1 | 3,10 | 382380022 | 140 | 51 | 3020 | 2 | 4,90 | | | | | | |
| 23 | 198,1 | 186,53 | 381380023 | 110 | 44 | 2517 | 1 | 3,38 | 382380023 | 140 | 51 | 3020 | 2 | 5,69 | 383380023 | 159 | 89 | 3535 | 4 | 7,80 |
| 24 | 206,2 | 194,59 | 381380024 | 110 | 44 | 2517 | 1 | 3,70 | 382380024 | 140 | 51 | 3020 | 2 | 6,00 | | | | | | |
| 25 | 214,2 | 202,66 | 381380025 | 110 | 44 | 2517 | 1 | 3,97 | 382380025 | 140 | 51 | 3020 | 2 | 6,38 | 383380025 | 175 | 89 | 3535 | 4 | 10,93 |
| 26 | 222,3 | 210,72 | 381380026 | 110 | 44 | 2517 | 1 | 4,26 | 382380026 | 140 | 51 | 3020 | 2 | 7,80 | | | | | | |
| 27 | 230,4 | 218,79 | 381380027 | 110 | 44 | 2517 | 1 | 4,55 | 382380027 | 140 | 51 | 3020 | 2 | 9,27 | 383380027 | 175 | 89 | 3535 | 4 | 14,06 |
| 28 | 238,4 | 226,85 | 381380028 | 110 | 44 | 2517 | 1 | 5,26 | 382380028 | 140 | 51 | 3020 | 2 | 11,40 | | | | | | |
| 30 | 254,6 | 242,99 | 381380030 | 120 | 44 | 2517 | 1 | 5,97 | 382380030 | 140 | 76 | 3030 | 2 | 13,50 | 383380030 | 175 | 89 | 3535 | 4 | 19,10 |
| 38 | 319,2 | 307,59 | 381380038 | 160 | 51 | 3020 | 1 | 8,73 | 382380038 | *160 | 76 | 3030 | 7 | 14,94 | 383380038 | *175 | 89 | 3535 | 8 | 21,65 |
| 45 | 377,9 | 364,12 | 381380045 | 160 | 51 | 3020 | 1 | 12,49 | 382380045 | *160 | 76 | 3030 | 7 | 19,80 | 383380045 | *175 | 89 | 3535 | 8 | 28,10 |
| 57* | 474,9 | 461,07 | 381380057 | 160 | 51 | 3020 | 6 | 13,87 | 382380057 | 175 | 89 | 3535 | 7 | 22,00 | 383380057 | 216 | 102 | 4040 | 8 | 40,50 |
| 76* | 628,4 | 614,65 | 381380076 | 160 | 51 | 3020 | 6 | 22,63 | 382380076 | 175 | 89 | 3535 | 7 | 37,00 | 383380076 | 216 | 102 | 4040 | 8 | 53,30 |



PIGNONI PER BUSSOLA CONICA - DIN 8187 - ISO 606

SPROCKETS FOR TAPER BUSHES - DIN 8187 - ISO 606

1"1/4 x 3/4"

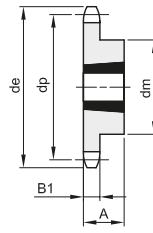
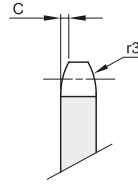
31,75 x 19,56 mm

Rullo 19,05 mm

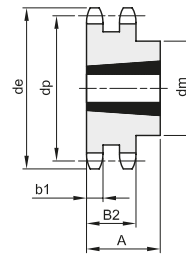
20B - 1 - 2 - 3

B1 B2 B3 b1 C r3

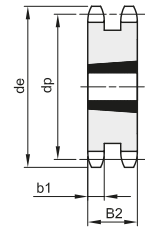
18,5 54,6 91 18,2 3,5 32



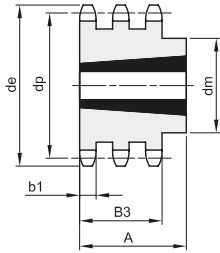
1



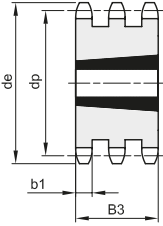
2



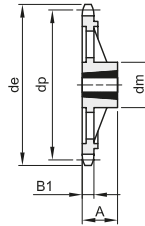
3



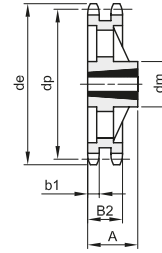
4



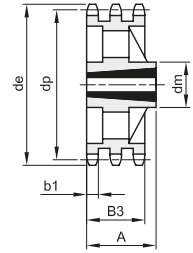
5



6



7



8

Materiale: Acciaio C45 / *Materiale: Ghisa EN-GJL-200

| Z | de | dp | semplici | | | | | doppi | | | | | tripli | | | | | | | |
|-----|-------|--------|-----------|-----|----|---------|------|-------|-----------|------|------|---------|--------|-----------|-----------|------|------|---------|-------|-------|
| | | | codice | dm | A | Bussola | Tipo | Kg. | codice | dm | A | Bussola | Tipo | Kg. | codice | dm | A | Bussola | Tipo | Kg. |
| 12 | 137,0 | 122,68 | 381400012 | 90 | 32 | 1615 | 1 | 1,90 | | | | | | | | | | | | |
| 13 | 147,5 | 132,65 | 381400013 | 90 | 32 | 2012 | 1 | 1,50 | 382400013 | 54,6 | 2517 | 3 | 2,20 | | | | | | | |
| 14 | 157,6 | 142,68 | 381400014 | 110 | 44 | 2517 | 1 | 2,40 | | | | | | | | | | | | |
| 15 | 167,7 | 152,72 | 381400015 | 110 | 44 | 2517 | 1 | 3,39 | 382400015 | 54,6 | 2517 | 3 | 4,00 | 383400015 | 91 | 3020 | 5 | 4,43 | | |
| 16 | 177,7 | 162,75 | 381400016 | 110 | 44 | 2517 | 1 | 4,23 | | | | | | | | | | | | |
| 17 | 187,7 | 172,78 | 381400017 | 110 | 44 | 2517 | 1 | 5,07 | 382400017 | 54,6 | 2517 | 3 | 5,00 | 383400017 | 91 | 3030 | 5 | 7,39 | | |
| 18 | 197,8 | 182,85 | 381400018 | 110 | 44 | 2517 | 1 | 5,91 | | | | | | | | | | | | |
| 19 | 207,9 | 192,91 | 381400019 | 110 | 44 | 2517 | 1 | 6,75 | 382400019 | 140 | 76 | 3030 | 2 | 6,30 | 383400019 | 91 | 3030 | 5 | 11,65 | |
| 20 | 217,9 | 202,98 | 381400020 | 110 | 44 | 2517 | 1 | 7,23 | | | | | | | | | | | | |
| 21 | 228,0 | 213,04 | 381400021 | 120 | 44 | 2517 | 1 | 7,70 | 382400021 | 140 | 76 | 3030 | 2 | 8,80 | 383400021 | 91 | 3535 | 5 | 12,80 | |
| 23 | 248,2 | 233,17 | 381400023 | 120 | 44 | 2517 | 1 | 8,78 | 382400023 | 140 | 76 | 3030 | 2 | 9,80 | 383400023 | 91 | 3535 | 5 | 17,38 | |
| 25 | 268,4 | 253,33 | 381400025 | 120 | 44 | 2517 | 1 | 9,50 | 382400025 | 140 | 76 | 3030 | 2 | 10,50 | 383400025 | 91 | 3535 | 5 | 22,40 | |
| 30 | 318,7 | 303,75 | 381400030 | 160 | 51 | 3020 | 1 | 11,60 | 382400030 | 160 | 76 | 3030 | 2 | 14,00 | 383400030 | 91 | 3535 | 5 | 36,50 | |
| 38* | 399,4 | 384,49 | 381400038 | 160 | 51 | 3020 | 6 | 15,80 | 382400038 | 160 | 76 | 3030 | 7 | 22,00 | 383400038 | 178 | 91 | 3535 | 8 | 28,00 |
| 57* | 592,3 | 576,36 | 381400057 | 160 | 51 | 3020 | 6 | 17,90 | 382400057 | 175 | 89 | 3535 | 7 | 37,00 | 383400057 | 216 | 102 | 4040 | 8 | 42,00 |
| 76* | 784,3 | 768,32 | 381400076 | 160 | 51 | 3020 | 6 | 25,00 | 382400076 | 175 | 89 | 3535 | 7 | 62,00 | 383400076 | 260 | 114 | 4545 | 8 | 85,00 |



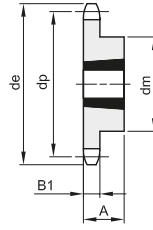
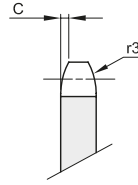
PIGNONI PER BUSSOLA CONICA - DIN 8187 - ISO 606

SPROCKETS FOR TAPER BUSHES - DIN 8187 - ISO 606

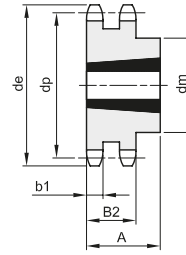
1"1/2 x 1"
38,1 x 25,4 mm
 Rullo 25,4 mm
24B - 1 - 2 - 3

B1 B2 B3 b1 C r3

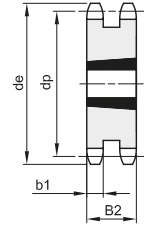
24,1 72 120,3 23,6 4 38



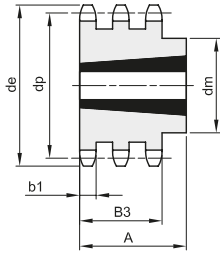
1



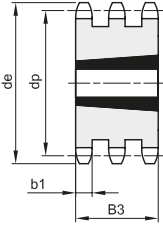
2



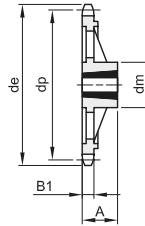
3



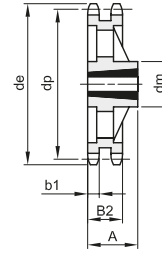
4



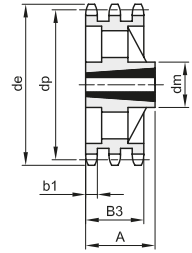
5



6



7



8

Materiale: Acciaio C45 / *Materiale: Ghisa EN-GJL-200

| Z | de | dp | semplici | | | | | doppi | | | | | tripli | | | | | | | |
|-----|-------|--------|-----------|-----|----|---------|------|-------|-----------|-----|------|---------|--------|-----------|-----------|-------|------|---------|--------|-----|
| | | | codice | dm | A | Bussola | Tipo | Kg. | codice | dm | A | Bussola | Tipo | Kg. | codice | dm | A | Bussola | Tipo | Kg. |
| 11 | 149,0 | 135,21 | 381420011 | 90 | 32 | 2012 | 1 | 1,70 | | | | | | | | | | | | |
| 12 | 161,0 | 147,22 | 381420012 | 90 | 32 | 2012 | 1 | 2,16 | | | | | | | | | | | | |
| 13 | 173,0 | 159,18 | 381420013 | 110 | 44 | 2517 | 1 | 2,77 | 382420013 | 72 | 2517 | 3 | 5,30 | | | | | | | |
| 14 | 185,0 | 171,22 | 381420014 | 120 | 44 | 2517 | 1 | 3,60 | | | | | | | | | | | | |
| 15 | 197,0 | 183,26 | 381420015 | 120 | 44 | 2517 | 1 | 4,20 | 382420015 | 72 | 3020 | 3 | 6,60 | 383420015 | 120,3 | 3030 | 5 | 20,00 | | |
| 17 | 221,0 | 207,34 | 381420017 | 140 | 51 | 3020 | 1 | 5,40 | 382420017 | 72 | 3020 | 3 | 10,30 | 383420017 | 120,3 | 3030 | 5 | 25,00 | | |
| 18 | 233,0 | 219,42 | 381420018 | 140 | 51 | 3020 | 1 | 6,10 | | | | | | | | | | | | |
| 19 | 245,5 | 231,49 | 381420019 | 140 | 51 | 3020 | 1 | 6,85 | 382420019 | 160 | 76 | 3030 | 2 | 14,80 | 383420019 | 120,3 | 3535 | 5 | 30,00 | |
| 20 | 257,5 | 243,57 | 381420020 | 140 | 51 | 3020 | 1 | 7,76 | | | | | | | | | | | | |
| 21 | 270,5 | 255,65 | 381420021 | 140 | 51 | 3020 | 1 | 8,52 | 382420021 | 160 | 76 | 3030 | 2 | 19,50 | 383420021 | 120,3 | 4040 | 5 | 35,00 | |
| 23 | 294,5 | 279,80 | 381420023 | 160 | 51 | 3020 | 1 | 11,31 | 382420023 | 175 | 89 | 3535 | 2 | 24,00 | 383420023 | 120,3 | 4040 | 5 | 44,00 | |
| 25 | 319,0 | 304,00 | 381420025 | 160 | 51 | 3020 | 1 | 13,33 | 382420025 | 175 | 89 | 3535 | 2 | 29,00 | 383420025 | 120,3 | 4040 | 5 | 50,00 | |
| 30 | 379,5 | 364,50 | 381420030 | 160 | 51 | 3020 | 1 | 19,00 | 382420030 | 175 | 89 | 3535 | 2 | 40,00 | 383420030 | 120,3 | 4040 | 5 | 60,00 | |
| 38* | 476,5 | 461,39 | 381420038 | 160 | 76 | 3030 | 6 | 24,00 | 382420038 | 175 | 89 | 3535 | 7 | 44,00 | 383420038 | 120,3 | 4040 | 8 | 66,00 | |
| 57* | 707,5 | 691,63 | 381420057 | 160 | 76 | 3030 | 6 | 45,00 | 382420057 | 175 | 89 | 3535 | 7 | 72,00 | 383420057 | 120,3 | 4545 | 8 | 120,00 | |
| 76* | 939,0 | 921,98 | 381420076 | 175 | 89 | 3535 | 6 | 70,00 | 382420076 | 216 | 102 | 4040 | 7 | 107,00 | 383420076 | 120,3 | 4545 | 8 | 131,00 | |