

TA20

series



Product Segments

- **Ergo Motion**

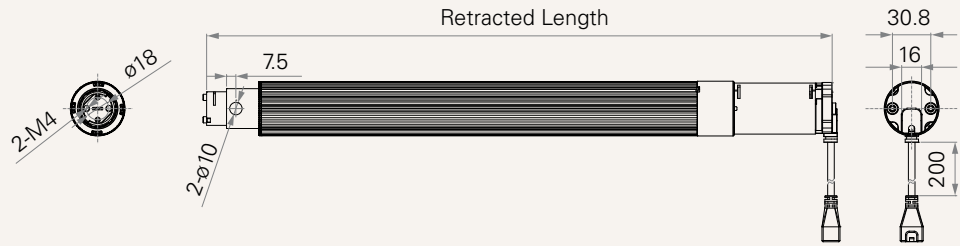
The TA20 is a 3 stage inline actuator which combines long stroke length with minimum installation dimension. This actuator is suitable for various customized lifting columns in height adjustable furniture, particularly with the need for a slim and neat structure.

General Features

Maximum load	600N in push
Maximum speed at full load	45mm/s (with 600N in a push condition)
Stroke	50~800mm
Minimum installation dimension	$\geq (\text{Stroke}/2) + 177\text{mm}$
Operational temperature range	+5°C~+45°C
Options	Hall sensors

Drawing

Standard Dimensions
(mm)



Load and Speed

CODE	Rated Load (N)	Typical Current (A)		Typical Speed (mm/s)	
		No Load 29V DC	With Load 29V DC	No Load 29V DC	With Load 29V DC
Motor Speed (5200RPM, Duty Cycle 10%)					
B	600	≤ 1.8	≤ 4.8	63	45

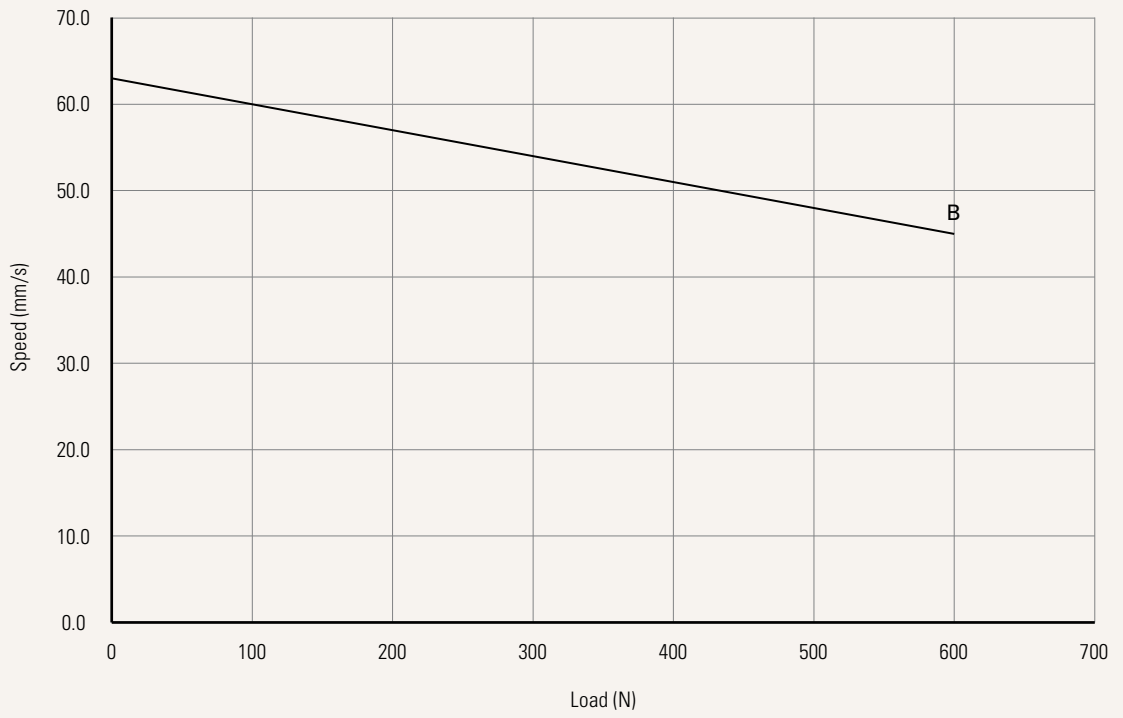
Note

- 1 This self-locking force level is reached only when a short circuit is applied on the terminals of the motor. All the TiMOTION control boxes have this feature built-in.
- 2 Please refer to the approved drawing for the final authentic value.

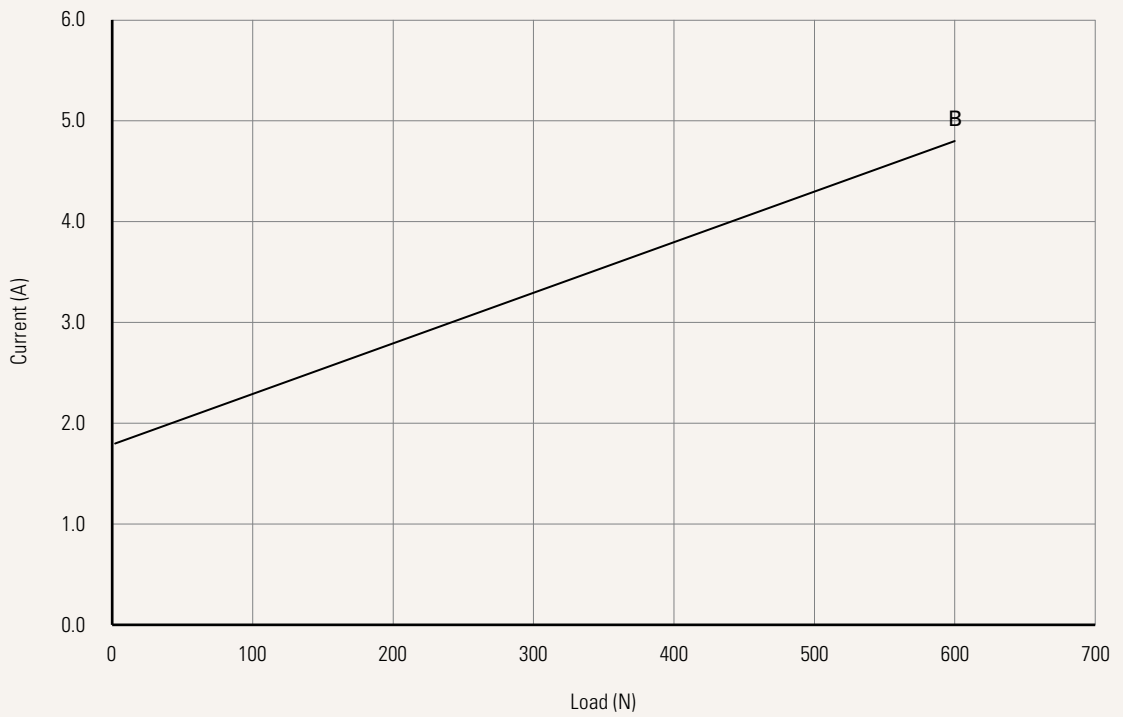
Performance Data (24V DC Motor)

Motor Speed (5200RPM, Duty Cycle 10%)

Speed vs. Load



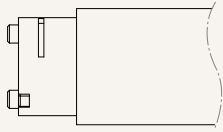
Current vs. Load



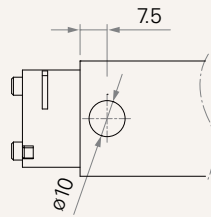
Load and Speed	See page 2		
Stroke (mm)	50-800		
Retracted Length (mm)	Minimum retracted length needs to $\geq (\text{stroke} / 2) + 177$		
Fixation of Mid-Tube (mm)	0 = Without	1 = Hole ($\varnothing 10.0$)	2 = Fixation bracket
	See page 5		
Front Attachment (mm)	2 = Plastic		
	See page 5		
Output Signals	2 = Hall sensor*2, standard		
Connector	H = Molex 6P, socket		
	See page 5		
Cable Length (mm)	1 = Straight, 200		
Extension Cable Connector	1 = Molex 6 pin (plug) to Molex 8 pin (plug)		
Extension Cable Length (mm)	1 = Straight, 500	3 = Straight, 1000	4 = Straight, 1500

Fixation of Mid-Tube (mm)

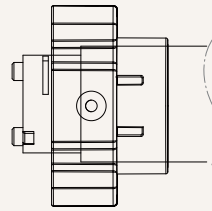
0 = Without



1 = Hole (Ø10.0)

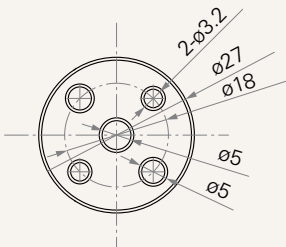


2 = Fixation bracket



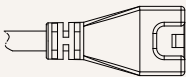
Front Attachment (mm)

2 = Plastic



Connector

H = Molex 6P, socket



Terms of Use

The user is responsible for determining the suitability of TiMOTION products for a specific application. TiMOTION products are subject to change without prior notice.